

O-RING AND SLIPCASE SPECIFICATIONS				
Europe	DVD	EDS022	Issue 4	Sept 07

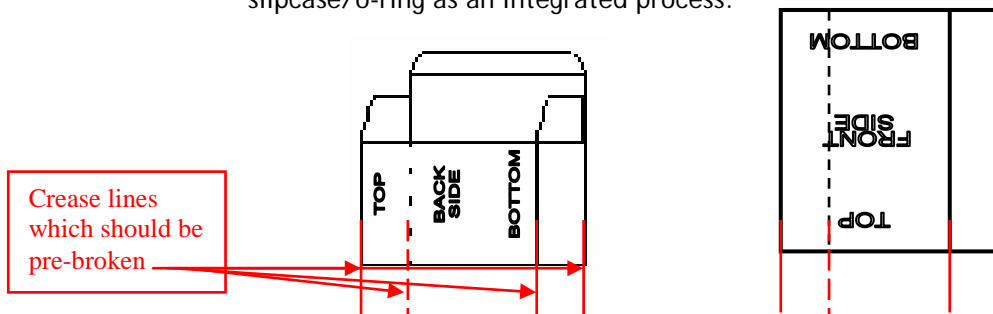
O-ring and Slipcase Specifications- for SINGLE Amaray style 15mm spine width DVD Soft Boxes for auto-packing process.

Table of Contents:

Page 1 General
 Page 2 O-ring open both ends for use with 15mm spine thickness DVD soft boxes
 Page 3 Slipcase for use with 15mm spine thickness DVD soft boxes
 Page 4 Expanded detail of tuck in flap in slipcases

General:

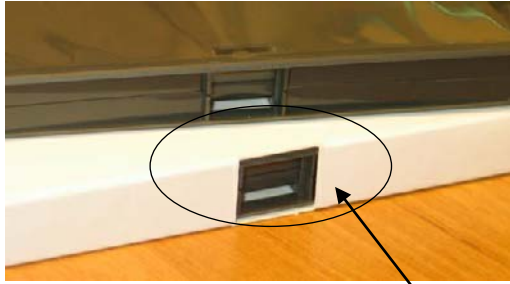
- Material: 500 micron thickness WBFBB Card
- Material thickness: Calliper tolerance $\pm 3\%$
- Material weight: Grammage tolerance $\pm 5\%$
- Direction of Grain: Parallel with Length for slipcases
 Parallel with Width for o-rings
- Dimensions: All to be within + 1mm across the batch
- Folds / Crease lines: Measurement between folds to be parallel to $\pm 0.5\text{mm}$
- Folds / Crease lines: The crease lines as shown on drawings below must be pre-broken during manufacturing.
- Incoming delivery: Product to be received flat with folded as shown below
- Wrapping: DVD cases can be over wrapped either before OR after putting into the slipcase/o-ring as an integrated process.



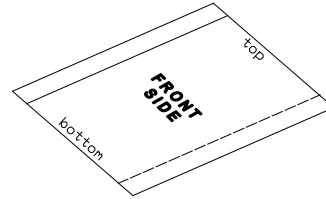
These specifications are for use with Technicolor approved DVD soft boxes only. Printed material supplied which does not conform to the relevant specification may require manual insertion at an additional charge or be considered unworkable.



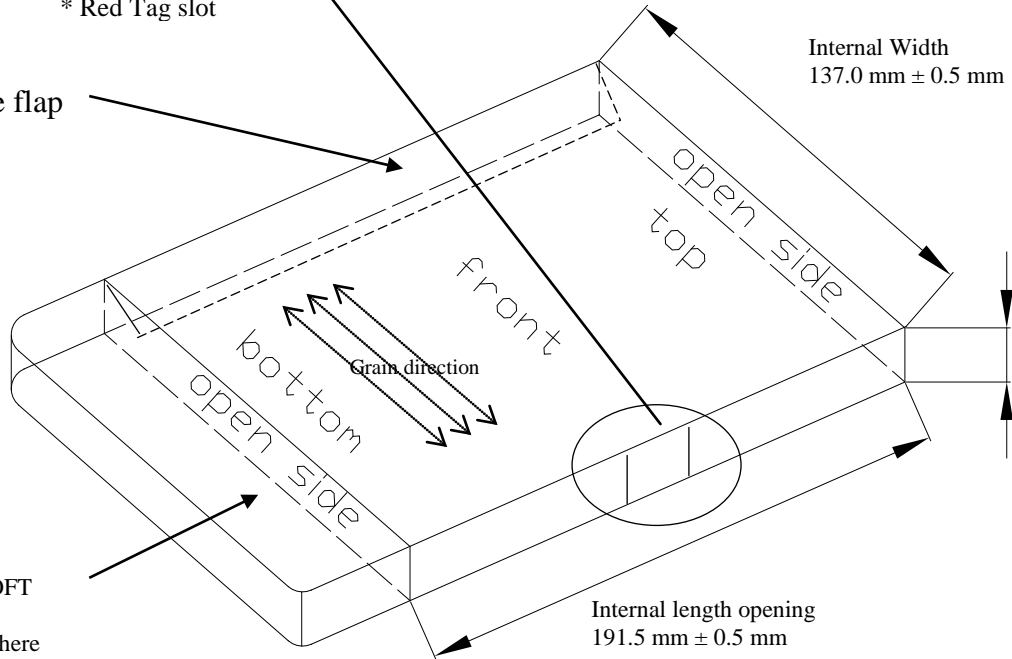
O-ring open both ends for use with 15mm spine thickness DVD soft boxes



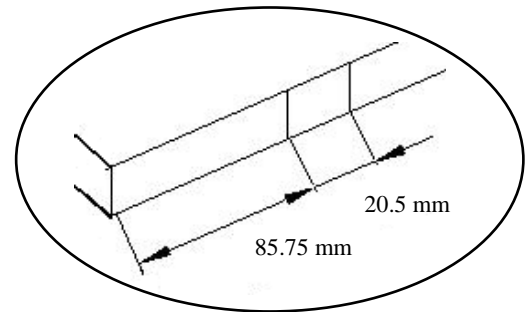
* Red Tag slot



Internal glue flap



DVD SOFT BOX
Inserted here



Red Tag slot dimensions

NUMBER OF DVD SOFT BOXES	MEASUREMENT OF INTERNAL DEPTH
1	15.0 ± 0.5mm

- Drawings are not to scale
- All dimensions are Internal for the formed unit
- * The Red Tag slot can be added as an option

Slipcase for use with 15mm spine thickness DVD soft boxes

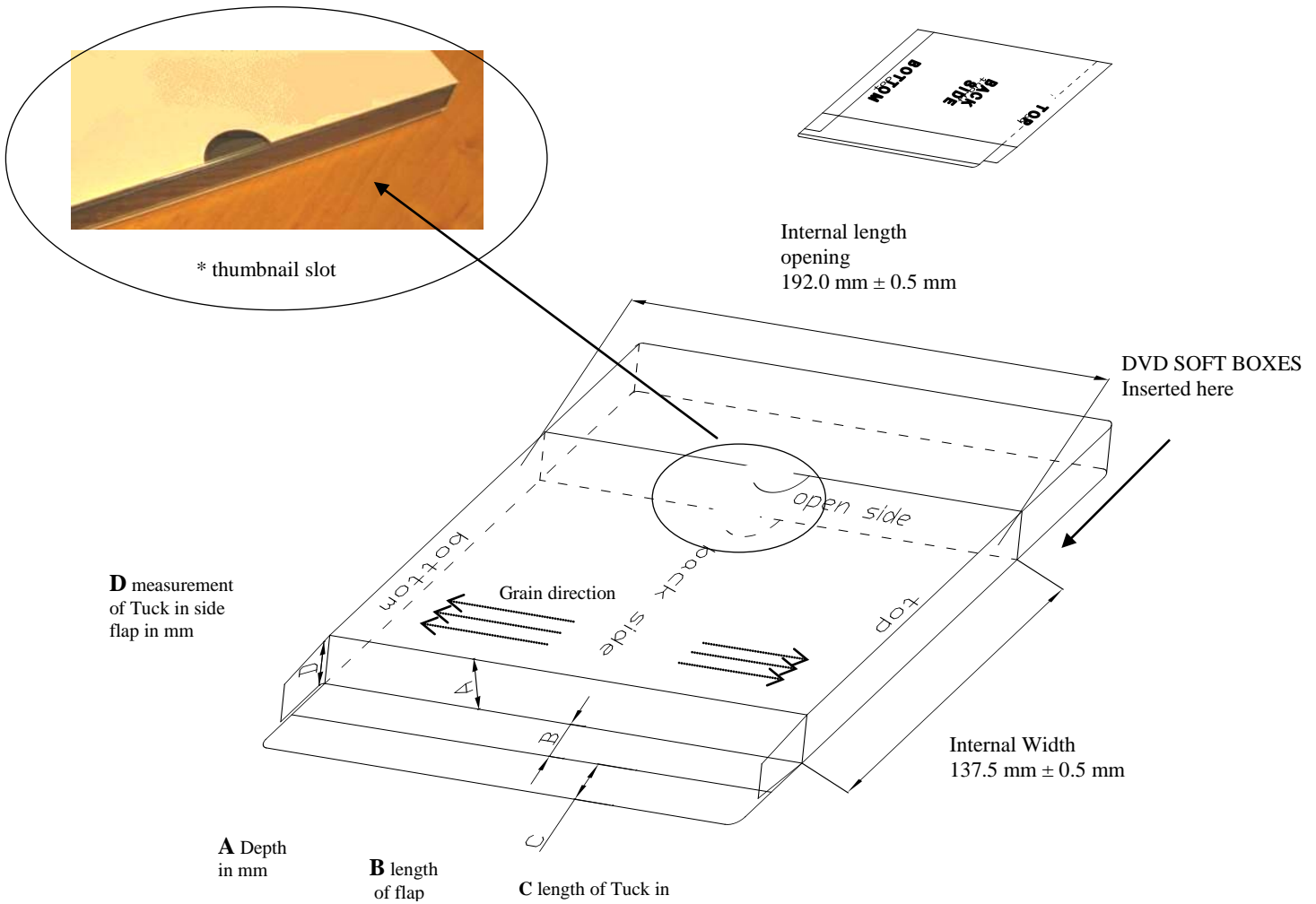


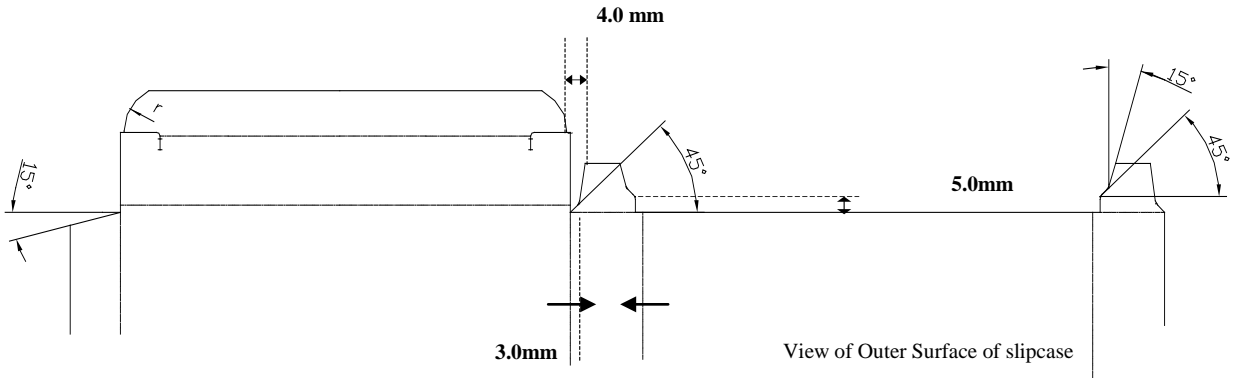
Table 1: measurement increments for use with 15mm spine width DVD soft boxes

NUMBER OF DVD SOFT BOXES	A MEASUREMENT OF INTERNAL DEPTH	B MEASUREMENT OF LID FLAP	C MEASUREMENT OF TUCK IN PORTION OF LID FLAP	D MEASUREMENT OF TUCK IN TAPERED SIDE FLAP
1	15.0 ± 0.5mm	14.5 ± 0.3 mm	16.0 mm	13.0 ± 0.3 mm

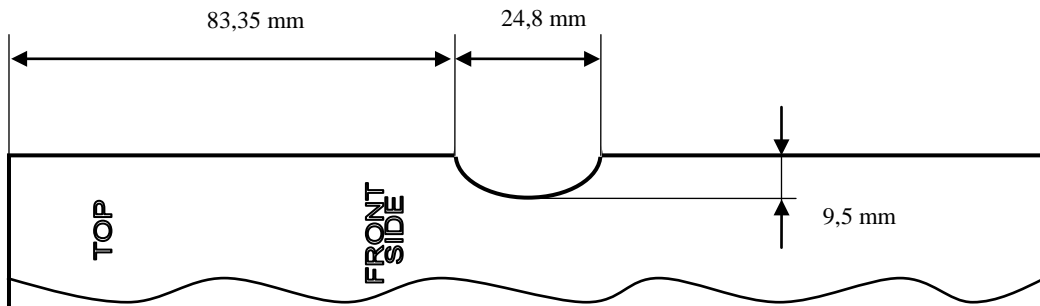
- Drawings are not to scale
- All dimensions are Internal for the formed unit
- * The thumb nail slot(s) can be added as an option



Expanded detail of tuck in flap:



Expanded detail - dimensions of thumbnail slot:



- Drawings are not to scale
- All dimensions are Internal for the formed unit