

DVD – SLIPCASE (SINGLE CASE)

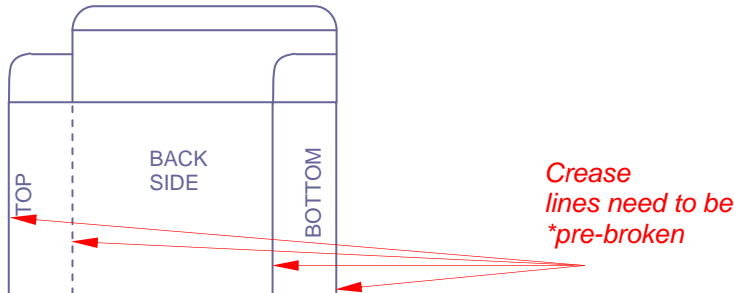
CONTENTS

- Page 1** General specification details
- Page 2** Slipcase for use with a 15.00 spine thickness DVD case
- Page 3** Expanded details of tuck in flap in slipcase

GENERAL

- Material:** 500 micron thickness WBFBB Card
- Material Thickness:** Calliper tolerance + / - 3%
- Material Weights:** Grammage tolerance + / - 3%
- Direction of Grain:** Parallel with *LENGTH* for Slipcases
- Dimensions:** All to be within +1.00 mm across the batch
- Wrapping:** DVD cases can be over wrapped before OR after insertion into the slipcase as an integrated process.
- Incoming Delivery:** Product to be received folded flat (not erected)
- Fold / Crease Lines:** Measurement between folds to be parallel to + / - 0.50 mm
The crease lines as shown on drawing below must be ***pre-broken** during manufacturing

DRAFT - PLEASE CONFIRM PRIOR TO ORDERING



*These specifications are for use with
Technicolor approved DVD cases only.
Custom pack charges applies for all slipcases*

Note: Drawings Not To Scale



DVD – SLIPCASE (SINGLE CASE)

TCAU Specification

TSA 201

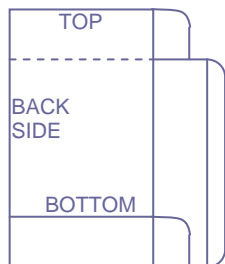
Issue: 2

July 2010

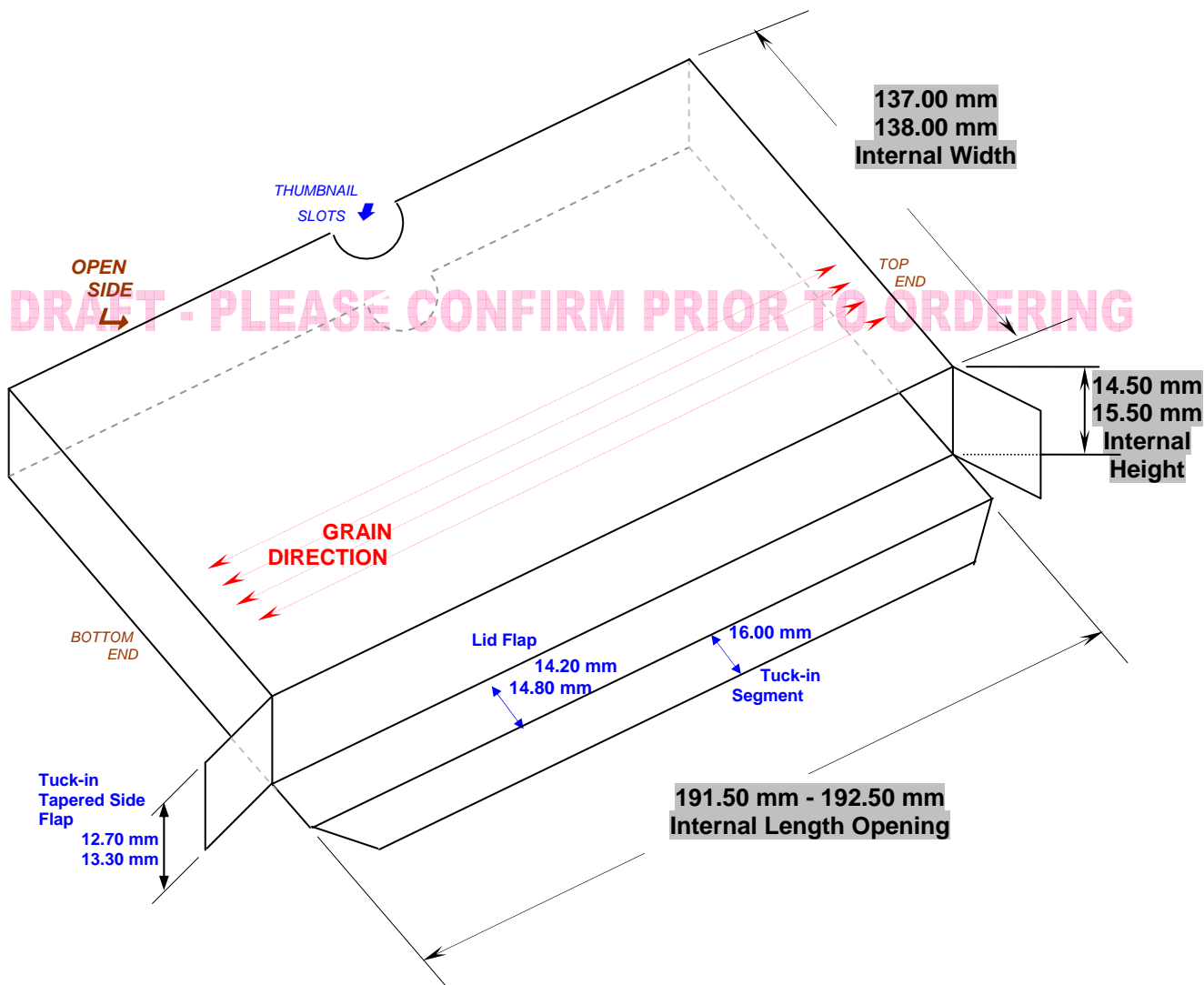
Page 2 of 3

SLIPCASE

Style: For use with one standard 15.00mm spine thickness DVD case



All dimensions are
INTERNAL for the formed unit
* **THUMBNAIL** slot(s) can be added as an option



Note: Drawings Not To Scale

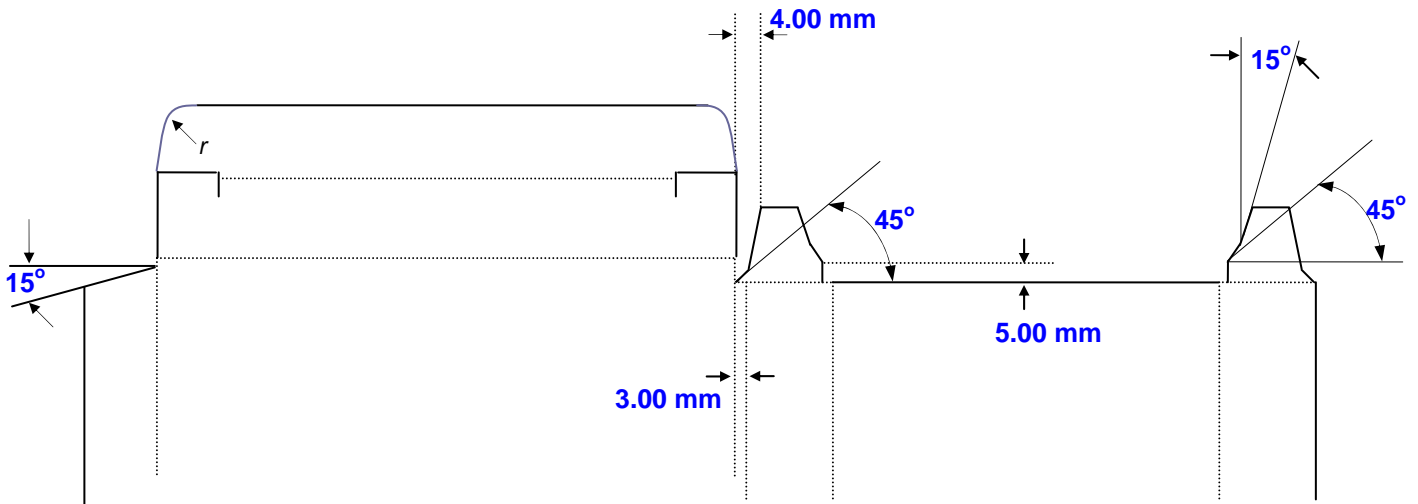


DVD – SLIPCASE (SINGLE CASE)

TCAU Specification	TSA 201	Issue: 2	July 2010	Page 3 of 3
--------------------	---------	----------	-----------	-------------

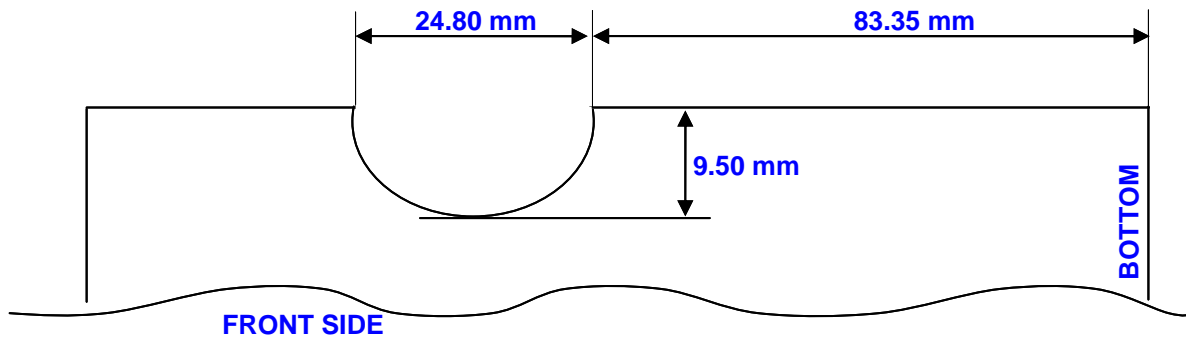
EXPANDED VIEWS

Tuck in Flap:



DRAFT - PLEASE CONFIRM PRIOR TO ORDERING

Thumbnail Slot:



All dimensions are INTERNAL for the formed unit

Note: Drawings Not To Scale